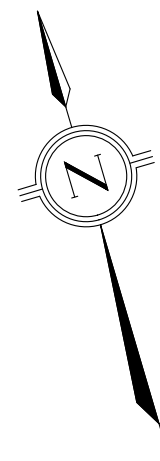
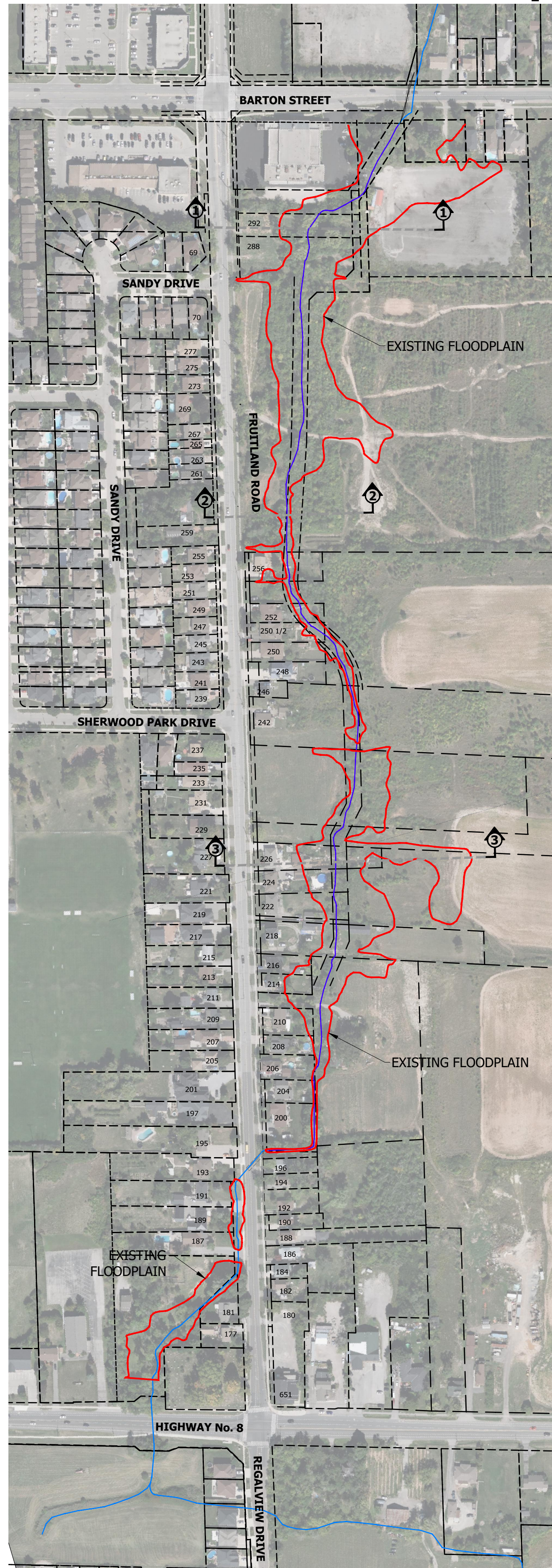


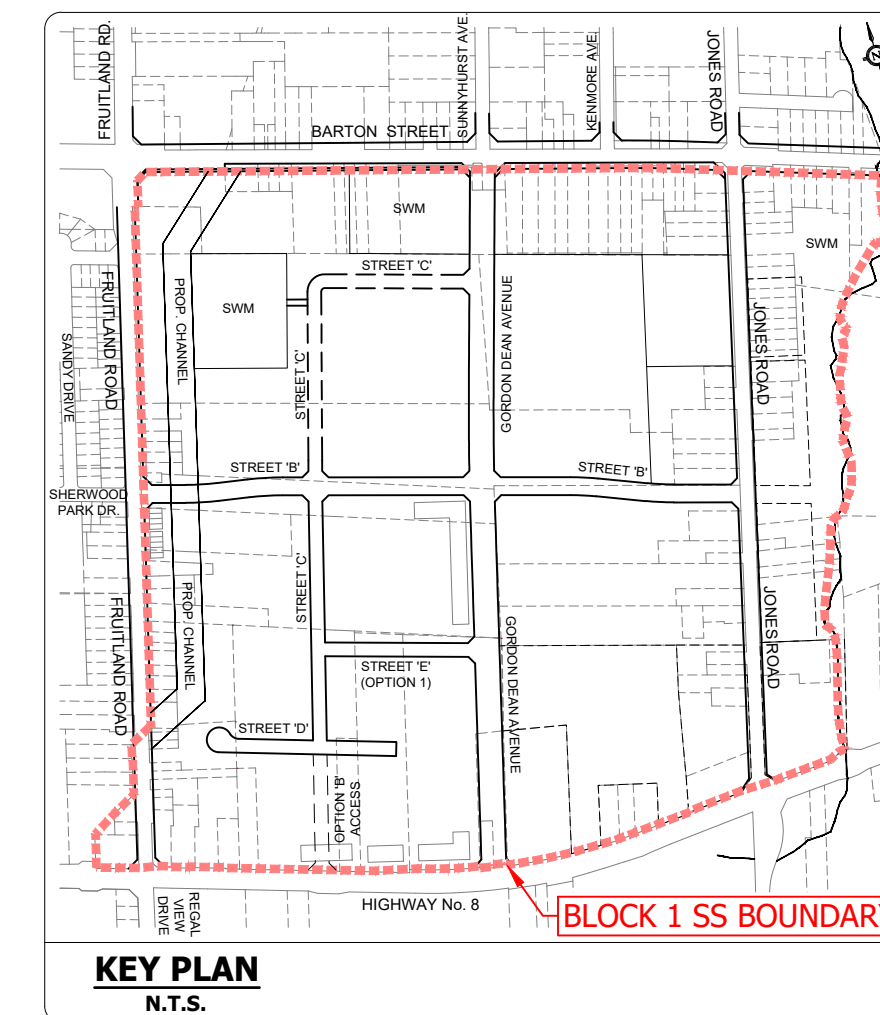
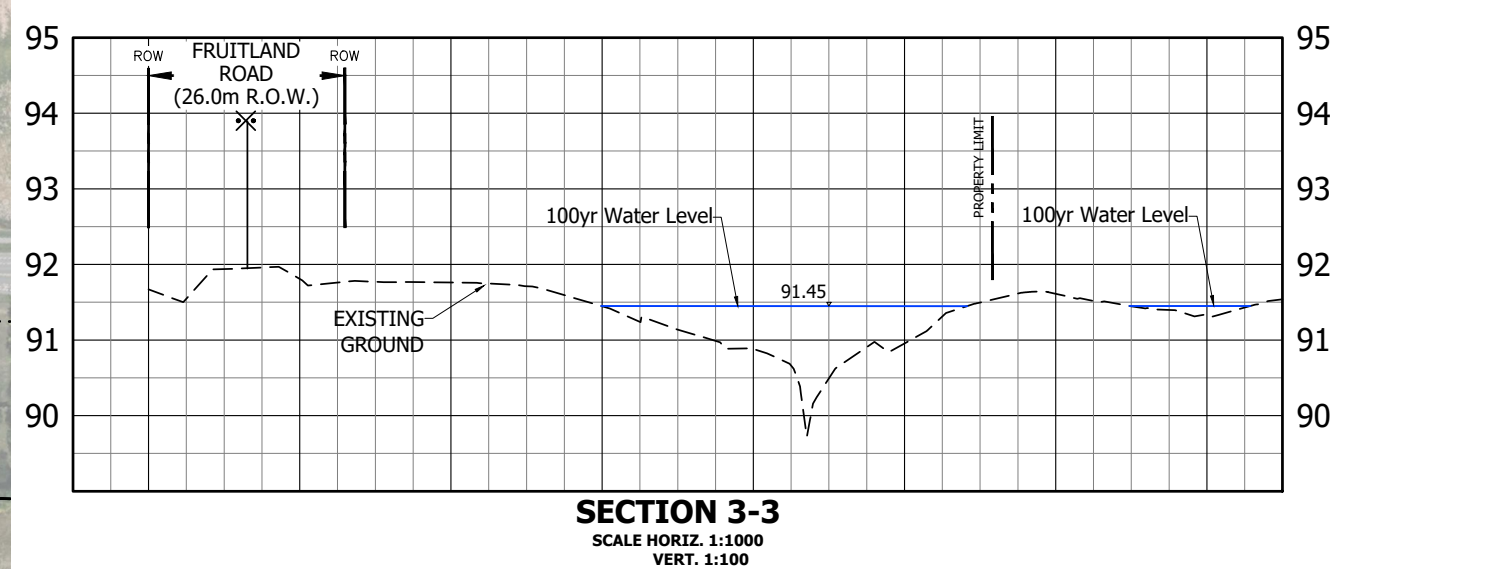
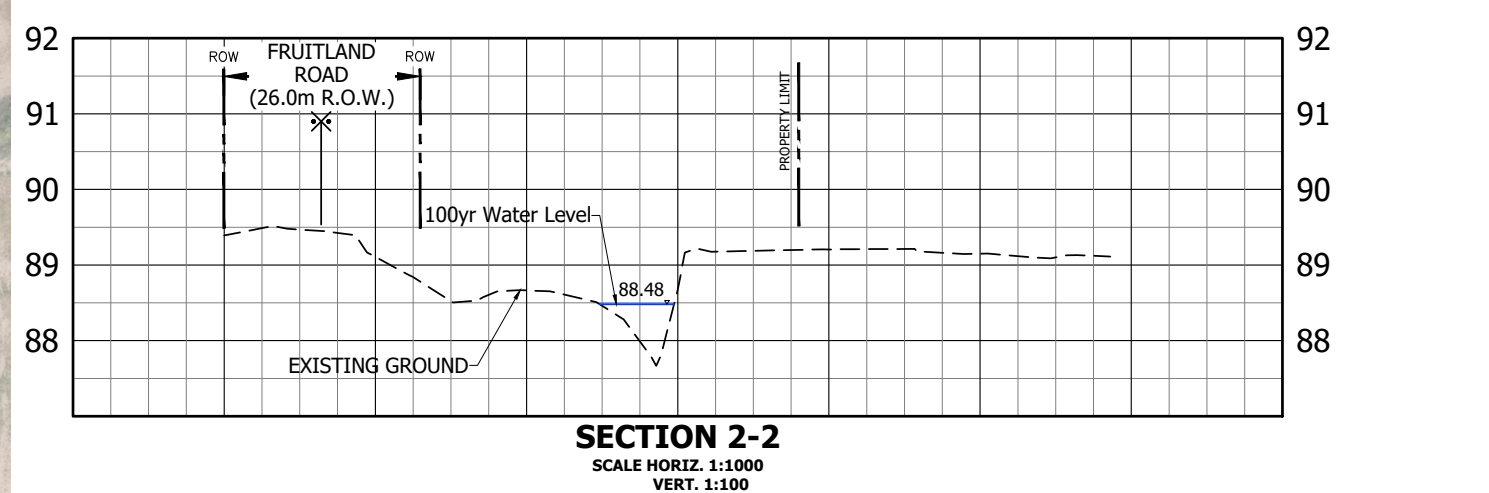
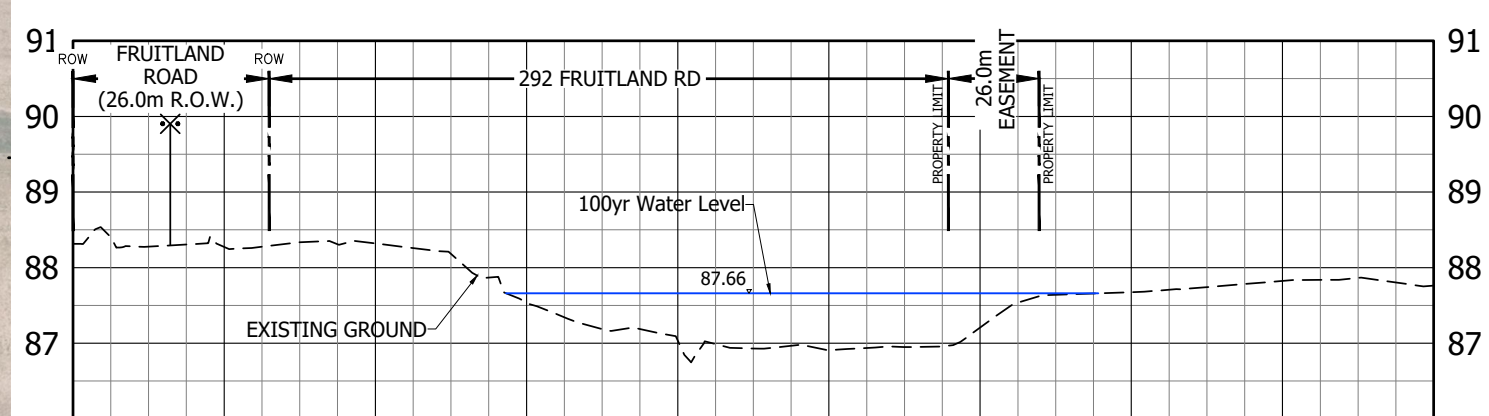
Watercourse 5 Proposed Realignment

Option 1 - Do Nothing



CURRENTLY THERE IS AN EXISTING WATERCOURSE RUNNING THROUGH THE SITE FROM SOUTH TO NORTH. THIS DIAGRAM INDICATES THE LOCATION OF THE WATERCOURSE, THE EXISTING 100-YEAR FLOODLINE, AND PROVIDES SECTIONS AT REPRESENTATIVE LOCATIONS.

THIS OPTION DEMONSTRATES THE "DO NOTHING" OPTION WHICH LEAVES THE WATERCOURSE 100 YEAR FLOODPLAIN IN PLACE.



LEGEND

- LIMIT OF PROPERTY
- EXISTING CONTOUR & ELEVATION
- EXISTING FLOODPLAIN

BENCHMARK
MONUMENT # 07720020001
ROUND IRON BAR WITH BRASS CAP LOCATED IN STONEY CREEK 9m NORTH OF CENTRELINE OF BARTON STREET 5m WEST OF CENTRELINE OF SUNNYHURST AVENUE AND 4m EAST OF CENTRELINE OF DRIVEWAY TO HOUSE No. 713.
ELEVATION: 87.489m CGVD-1928-1978.

URBANTECH® Consulting
A Division of Leighton-Zec West Ltd.
2030 Bristol Circle, Suite 105
Oakville, ON. L6H 0H2
TEL 905.829.8818 • urbantech.com

BLOCK 1 SERVICING STRATEGY
CITY OF HAMILTON

WATERCOURSE #5
REALIGNMENT
OPTION 1

PROJECT No.	DATE	SCALE	DWG No.
20-263	SEPT. 2023	1:2500	PIC-8

F:\PROJECTS\20-263\BLOCK1 SS - HAMILTON\DRAWINGS\2000 - PIC-8-8.DWG